

*H. Allen*

THE  
Year Book



1 9 2 8

Chelmsford High School

*Class of  
Nineteen Hundred and Twenty-eight*



CHELMSFORD HIGH SCHOOL  
CHELMSFORD, MASSACHUSETTS



CHELMSFORD HIGH SCHOOL

*Brains and character rule the world. The most distinguished Frenchman of the last century said, "Men succeed less by their talents than by their character." There were scores of men a hundred years ago who had more intellect than Washington. He outlives and overrides them all by the influence of his character.*

WENDELL PHILLIPS.



*DEDICATION*

To

HORACE E. HOBBS

*Principal of the High School,*

Since September, 1927

who has won the esteem and admiration  
of the students of Chelmsford High School  
we, The Class of 1929, dedicate this book.

*To the Students of Chelmsford High School:*

This is the popular time of year for two major events in the life of most American high schools—the publishing of a year book and the graduating of our Seniors. The first project is an attempt to publish an annual which will picture the life of our school, as participated in by the various classes, clubs, and organizations. This is one of the best ways in which to acquaint our friends outside of the school with some of the more pleasant features of our work, and to perpetuate these happy moments of school life in such a manner that this may indeed be a most treasured memory book. In our school the unique practice has been inaugurated by the Junior Class of producing this "Mirror of our School Days" in honor of our Seniors, and featuring within it the individual picture of each member of that class. This is done with the dual purpose, first, of recognizing and performing service for service, and secondly, of allowing the Seniors to concentrate their attention upon their one chief objective, that is, to complete their last year of high school in a most successful manner.

This brings us to the second and doubtlessly the most vital event of the school year, that which has recently come to be called, most appropriately, Commencement. I say properly called because I believe that the name Commencement signifies most truly the occasion of the entrance of a boy or girl into the game of life. It does not signify, as used to be thought, the end of the happy school days and the beginning of the drudgery of life in which we adults have been struggling more or less successfully. Some of them will actually continue their school work, to which they have become accustomed, and all of the others will continue in the great school of life, Experience. Here, they will use the habits of attacking problems which they have acquired in their school days, and their success or failure will depend almost entirely upon the kind of personality which they put into it. Rather than causing them to feel that their graduation means a funeral to pleasure in life and that now they are "up against it", they should be encouraged to understand that the gateway to life, which is now ajar before them, leads only into the fields of even greater opportunity, the key to which is a pleasant "I'll try, sir."

It would be well for every pupil to look upon life as a great mirror which truly reflects the acts and ambitions of every individual. Smile into the face of the world and a smile comes back; render good service to others and good service is returned to you; think good thoughts and the same good thoughts will be thought of you. Let no one cloud your vision, poison your mind, or dwarf your soul with the false imagination that the world is not giving you a square deal. The only way to avoid getting a square deal from the world is by not giving the world a square deal yourself. The happy and healthy reflection, which we would have come back to us from this mirror of life, will be assured for all posterity as long as we send out from our high schools every June a group of boys and girls indoctrinated with the motto of our present Seniors, "Build for character, not for fame."

*Horace E. Hobbs.*



## YEAR BOOK STAFF

<i>Editor-in-Chief</i>	Ebba Peterson	<i>Humor Editor</i>	John Birtwell
<i>Assistant Editor</i>	Annette Loiselle	" "	Dorothy Coburn
<i>Business Manager</i>	Arthur Kirk	<i>Literary Editor</i>	Ruth Johnson
<i>Ass't Bus. Mgr.</i>	Marion Grantz	" "	Dorothy Dixon
<i>Advertising Mgr.</i>	Ernest Byam	<i>Circulating</i>	Leslie McDonald
<i>Ass't Adv. Mgr.</i>	Edna Davis	<i>Agents</i>	Ruth Billson
<i>Art Editor</i>	Adam Zabierek	"	Mabel Morrell
<i>Ass't Art Editor</i>	James Gale	"	Raymond Eno
<i>Sport Editor</i>	Wilbur McCormack	"	Mary Fitzpatrick
<i>Social Editor</i>	Mildred Buchanan	<i>Faculty Advisers</i>	C. Edith McCarthy
<i>Ass't Social Ed.</i>	Josephine Quigley	" "	Business
<i>Sales Manager</i>	John McQuade		F. Christine Booth
<i>Ass't Sales Mgr.</i>	Mildred Shinkwin		Literary

We have built this book with such an end in view that when on some future day, with old friends about you, the mantle of time will be cast aside, and student life will return through the pages of our memory book.



Back row: C. Hyde, J. Harmon, M. Turner, E. Thwing, J. Low, C. Booth, E. McCarthy  
 Front row: H. Reed, R. Coates, C. H. Walker, H. E. Hobbs, E. Donahoe

Charles H. Walker—*Superintendent*

### FACULTY

Horace E. Hobbs—*Principal, P. A. D., Algebra.*

Ralph P. Coates—*Assistant Principal, General Science, Chemistry, Physics.*

C. Edith McCarthy—*Bookkeeping, Typewriting, Introductory Business.*

Marion L. Turner—*Freshman Mathematics, Geometry, Biology.*

Josephine F. Harmon—*Typewriting, Shorthand, Office Practice.*

Helen A. Reed—*English.*

F. Christine Booth—*Latin, Advance Mathematics, English.*

Edith M. Donahoe—*World History, Civics, Commercial Geography, English.*

Jeanne M. Low—*French, English.*

### SUPERVISORS

Ellsworth R. Thwing—*Physical Director.*

Charlotte Hyde—*Supervisor of Music.*

## CLASS ODE

At last we've reached the cross-roads,  
The parting of the ways,  
Where each must choose the pathway  
That leads through future days.

\* \* \* \*

'Tis hard to leave our school life  
And friends so tried and true;  
But Progress beckons onward  
To the goal we have in view.

\* \* \* \*

If we could read the pages  
In the secret book of life;  
If our paths be strewn with roses  
Or with trouble, care, and strife.

\* \* \* \*

We'll not trust in fickle fortune  
Nor be by fame misled,  
But build our future life's work  
On character instead.

\* \* \* \*

Let us blazon on our standard,  
With a purpose firm and great,  
The Orchid and the Silver  
Of the Class of twenty-eight.

A. P. M.—'28.



*This is 1929 pneumonia at Lewisburg where she  
Lived in  
nurse.*



JOAN MARIE QUINN  
French Club  
Captain, Girls' Basketball  
Senior Play  
Tennis Club  
"Quinney"  
Dramatic Club  
Pres. of Senior Class '28  
Bank Trustee

*Chelmsford is  
presented this year,  
Joan in number.*

Personality and pep—that's Joan, always doing things for her classmates and also finding time to study. Joan is one of the few who have attained four A's this year. When a Freshman she proved to us that she was a good scholar. During our Sophomore year she helped us to win our track meet and proved she was also an athlete. Last year she proved a good actor in the play put on at the Junior Frolic. Joan again starred as "Minnie" in the Senior Play. Not enough can be said about all that Joan, as president, has done for the Senior Class this year. We predict great things for her.



ERNEST PARKER STEARNS  
Vice Pres. Science Club  
Tennis Club  
Vice Pres. Senior Class '28  
Vice Pres. A. A.

Why don't this boy ever find anyone to chum with? He always seemed so lonely, wandering around by himself. Mike says he likes the distribution of rooms this year—it is so much easier to visit one's friends, especially in Room 1. One couldn't ask for a better natured fellow than "Mike." He is always willing to help in everything from keeping tennis scores to serving refreshments. We all have enjoyed "Mike" and hope his future will be full of happiness.

*Ernest Stearns*



GENEVIEVE KATHLEEN KRASNECKY  
Glee Club  
Vice Pres. French Club  
Dramatic Club  
Blue Moon  
Tennis Club  
"Jennie"  
Basketball  
A. A. Treasurer  
Bank Trustee  
Operetta  
Secretary of Class '28

Jennie is an all-round sport in every sense of the word. She is always ready to help in club work. She has also shown her sportsmanship in athletics. Jennie is one of Chelmsford High School's star typists, for steady drill and practice have gained six award pins for her. We wonder how it is she always seems to have her next day's assignments completed. Will you give us a clue, Jennie? We all wish her the best of luck in her chosen profession as a nurse.

*at Lewisburg  
presented  
Jennie*



ISABELLE LOUISE HARMON  
French Club  
Dramatic Club  
Glee Club  
Treasurer of Class '28  
Basketball  
A. A. Executive  
Operetta  
Tennis Club  
Bank Trustee  
Stage Manager Senior Play  
Stage Manager Operetta

From glancing at the above memberships one can judge Isabelle's interest in our school activities. We might state here that Isabelle has exceptional ability in putting things across. She seems to possess the qualities necessary to success—Will- ingness, Determination, and Ability.

In athletics Isabelle has been very active. Didn't she make a fast forward and couldn't she drop the ball into the basket? Her ready smile has accumulated many friends for her, and although she is going from us now, she leaves with us the memory of four pleasant years.

*Isabelle Louise Harmon  
back to another  
present*

*Book Keeper Ginger Lee*



FRANCES BARON

"Frankie"

Blue Moon Ticket Committee of Senior Play  
Glee Club

*Married in '31*

Who wouldn't envy that Van-shaped knot at the back of "Frankie's" head? But to come down to business, "Frankie" possesses many qualities we all might envy. Beneath her shy and unassuming manner lies the best of wit and wisdom.

"Frankie" is undoubtedly a very clever student in book-keeping. Whether her first employer represents a small proprietorship or a huge corporation, he will give only praise for her efficiency.

We hope her future may be bright and happy as she is herself.

*Book Keeper  
Ginger Lee  
L. H. S. Bookkeeper  
L. H. S. Bookkeeper  
L. H. S. Bookkeeper*



ROBERT OLIVER BOWEN

"Bob"

President of A. A.  
Science Club  
Tennis Club  
Football

Basketball  
Relay Team  
Baseball  
Senior Play

*Annapolis*

President of the Athletic Association, all round sport, student, star mathematician, actor, "Bob" has indeed been an asset to the school, but he does not think so—being very modest. We might add—body escort for Stearns.

We understand "Bob" aspires to enter Annapolis soon. We are certain he is going to make his mark in the world and make C. H. S. proud of him.



FLORENCE GERTRUDE BUCHANAN

"Flor"

"Silence is Gold, Speech is Silver"

*Book Keeper  
Prof. office*

If that is the case, Florence ought to have oodles of money. She is a quiet girl, but her great delight is in the debiting and crediting of elusive sums in bookkeeping. Another of her particular enjoyments is in English when she has to get up before the class—oh yes!

Sometimes she gets angry with her little girl friend, Dot, but it doesn't last long. Generally they are on the best of terms, except when Dot allows about five minutes to run to school.

Good luck and good returns from your commercial ability.



EDITH FRANCES CHARLTON

"Charlie"

President of Dramatic Club  
Tennis Club  
Basketball Team

French Club  
Blue Moon  
Glee Club  
Operetta

Edith is about the happiest girl in the Senior Class. She is always ready to do her bit and she is right there when it comes to cheering up anyone who is feeling blue. Edith has been very active in all school and class events. As president of the Dramatic Club this year she has done excellent work. What would the basketball team have done without her as jumping center? Who would ever have heard of the C. H. S. Basketball Banquet if Edith hadn't proven such an able chairman? The class of 1928 wishes her all Success!

*you want  
about  
L. H. S. Bookkeeper  
L. H. S. Bookkeeper*



LENA MAY GAGNON  
Dramatic Club  
Tennis Club

"Baby Doll"  
Glee Club

*Remember the good times we had in other days*  
Very different is Lena in all her ways. Very studious, and how! She sports a boyish bob and boyish actions, too. And say her teeth would do for a Pepsodent Ad! She has a very pleasing disposition and is always willing to help other people. Since Lena always has a witty answer to all questions asked her, when she is around, the party is certainly far from dead. We wish her the best of luck in her life work.

*"Baby Doll"*



ALICE AMANDA GAUTHIER

"Al"

Dramatic Club  
Tennis Club  
Bank Trustee  
Blue Moon  
Chairman Ticket Com. for Operetta  
Chairman Ticket Com. for Senior Play  
Ticket Com. for Senior Dance

*Will always be remembered*  
The proverb, "Good things come in small packages" may be well applied to Alice, for although she is small in stature she participates in the success of "Big Things." Whenever any tickets are to be distributed, Alice is right there with her pen in hand. She runs the mimeograph and multigraph to perfection. When Alice is not diligently pondering over P. A. D. problems she is busy at a Royal Typewriter in Room 3. Whatever she may do or wherever she may go she may be sure the memory that she leaves will be cherished.



LOUISE MAY GRAHAM  
Dramatic Club

"Crackers"  
Senior Play

*Sincerely Yours*  
Louise, as a young lady, graced the "Hidden Guest" in her own delightful manner. Her favorite sport is dancing. She can roll her eyes to perfection and perform other tricks typical of a perfect flapper. When "Crackers" isn't looking for a comb, you can easily find her in front of the mirror in the locker room. This may lead you to believe that her ambition is Hollywood, but it isn't—her greatest ambition is to be a teacher. We wish her all success.



EMIL GOTTARD HABERMAN

"Haby"

Glee Club  
Blue Moon

Tennis Club  
Dramatic Club

We would evoke the title of Mr. to Haberman because of his dignified mien. This does not mean he is frigid in his manner—far from it. However, a fellow like Emil helps to uphold the dignity of the Senior Class and we could ever wish for more like him.

Did you know that Emil plays the piano? Yes, he certainly does!

We do not know how much of his thoughts girls occupy, but we do know that he is the only male member of three of his classes. We have been told that he is a good illustration of the old saying—"You know the quiet kind, etc." For all of that, he is a dandy good fellow.



ALICE BEATRICE HARMEL

Bank Trustee  
 Dramatic Club  
 Operetta  
 Tennis Club

President of French Club  
 Glee Club  
 Senior Play

Spirits—Melons—Laughs—Alice—Wasn't she great? Everyone appreciated Alice as "Melons" in our Senior Play.

Alice is rather quiet but is rarely at loss for words in recitations; on the contrary she is a veritable storeroom of knowledge. A's are common occurrences on her card. As president of the French Club, Alice proved a very efficient executive. The success which has attended Alice throughout her C. H. S. career will not desert her in the future, we are sure.

*Remember when we used to stand together in Physical*

*Home*



MAE ELIZABETH HINES

Dramatic Club

"Mae"  
 French Club

A black haired miss is she,  
 With hair just as curly as can be.  
 To be a nurse is her chosen vocation,  
 And Concord, N. H. will be her location.  
 We wish her success as classmates should,  
 In her future work that is to do good.

*So a friend's name like Mae is very nice*

*Mae in Boston*



ARTHUR WILSON HOWARD, Jr.

Science Club

"Happy"  
 Glee Club  
 Football

Possibly everyone knows that from the shores of that noted summer resort "Carlisle Beach" comes "Happy." He has one of the latest models of Ford touring cars commonly known as the "Mayflower." He is always ready to lend his services, especially when a group of eager girls desire at the last moment to go to an out-of-town basketball game. Although "Happy" seems to be always serious and studious, he is in reality full of fun, with a smile for everyone.

*W. Wilson*



LORNE F. HOWARD

Captain of Basketball Team  
 Senior Play  
 Baseball

"Lorny"  
 Science Club  
 Tennis Club  
 Relay Team

Here he is—Captain of the first Basketball team of C. H. S. We'll be missing him next year.

Although Lorne wears a serious look upon his face, he can be just as full of fun as the other fellow. He is another one of those Seniors who have found Room 1 extremely interesting. Probably he has needed a little help in Math, or maybe he is fascinated by the polliwogs.

Amiable, determined, and ever faithful, Lorne has been willing to do his part for the class and school. He deserves the best of life and we all wish him just that—the best.



EDWIN MOSS JEWETT

President of Science Club  
Tennis Club  
Glee Club

"Eddie"

Football  
Varsity Basketball Team  
Relay Team

"School-day Sweethearts" seems to apply here. However, Eddie is very serious—shown especially when he was football manager. We had to thank him for some very good games. He is also an all-round sport. Besides being a star basketball player he wields a mean tennis racket, and plays golf on the side.

Eddie goes about his way never glancing right nor left until he reaches the boys' side. And then! His humor and popularity rise up, for he enjoys the reputation of being a "he" man. We know that Eddie will deserve all success in whatever he undertakes.



MARGARET INGA JOHNSON

French Club  
Dramatic Club

"Mickie"

Tennis Club

Margaret is one of the quietest girls in the Senior Class and can generally be found studying in Room 5. She has chosen teaching as her life work. At least some of the boys and girls of tomorrow will have the benefit of what we are sure will be the finest of academic instruction. With her winning personality she will be successful in her work. We wish her all the success in the world!



MARGARET ELIZABETH KINCH

Treasurer of Bank Trustees Chairman, Ticket Com. Senior Play  
Secretary and Treasurer of Tennis Club  
Dramatic Club Stage Manager Senior Play

"Kinchy"

Introducing the lady behind the scenes in our Senior Play—Margaret. How could we have progressed without her? She never misses a groan or a belly! As a bank treasurer she has scored a name for herself. It is not her fault if someone in C. H. S. has not deposited. Margaret has adopted a new system of short-hand which to her seems easier. We hope so. If she's not bustling to do her bank work in the morning, you'll see her pounding the typewriter keys in Room 3. We wish her luck in her chosen profession.



MARY CECILIA LARKIN

President of Bank  
Glee Club  
Dramatic Club  
Executive Board A. A.

"Sis"

Senior Play  
Operetta  
Tennis Club  
Orchestra

In Room 3 she can manipulate the typewriter keys to perfection. "Sis" is the only one in Chelmsford High School who has received an Underwood gold pin in typewriting.

Did you see "Iona" in the Operetta, or "Nellie" in the Senior Play? If you didn't, you surely missed something. If you want a true friend—"Sis" is the girl. Not only can she wield a mean tennis racket, but oh! those piano keys! Here's best of luck to our great Musician!

*Novie is a fine who  
Senior Play  
Blue Moon  
stretch one's imagination very far to know what "Novie's"  
chosen profession is to be, because his covers on the "Blue  
Moon" prove he is some artist. In this line and all others, each  
of us wishes him the best of luck. Here's to you, "Novie"!  
By the way, we all wonder where "Novie" picked up his  
Dutch lingo so fluently!*

*engaged to Ruth Bradley*



WENDELL DENTON LUKE

Senior Play  
Blue Moon

"Novie"  
Dramatic Club  
Glee Club

Is there any one of us who will not remember "Briggs," a great factor in the success of the Senior Play? Will we ever forget his exceptional talent in drawing? One doesn't have to stretch one's imagination very far to know what "Novie's" chosen profession is to be, because his covers on the "Blue Moon" prove he is some artist. In this line and all others, each of us wishes him the best of luck. Here's to you, "Novie"!

By the way, we all wonder where "Novie" picked up his Dutch lingo so fluently!



ALICE POWDERLY McENANEY

President of Latin Club  
French Club  
Glee Club

"Alice"  
Bank Trustee  
Dramatic Club

*normal*

What shall we do when Alice leaves our school? We shall not forget her smile and 'Good Morning' to everyone.

Our school magazine, too, will miss Alice's contributions, for it is A. P. M. here and A. P. M. there so often in it. Alice always has her lessons prepared but is ever willing to enter in the fun.

She is surely an excellent example of the "sober, steadfast, and demure." Success, we know, awaits her.



MATTHEW JOHN OLSHINSKI

Football

"Matches"

When "Matches" entered as a Freshman, his ambition was to become a lawyer. Since then, no doubt, his aspiration has changed, for he does not like to argue. Lately "Matches" has become one of those fellows who think of their studies first. The past season he surprised us all by playing football. His old pal, Red Moran, has gone and "Matches" has to carry on himself.

We are sure that whatever "Matches" attempts he will carry out. Good Luck!



LYMAN EDWARD PEVEY

Orchestra  
Blue Moon  
Lincoln Essay

"Shiek"  
Football Team  
Senior Play  
Tennis Club

*Lyman E Pevey 24  
Senior Play  
Tennis Club  
your*

Lyman has a great many talents. He has proven his ability as an actor, musician, athlete, and artist. He is also well known as a good fellow and as the neatest and best dressed boy in the school. As one of the art editors, of the "Blue Moon" and as our hero in the Senior Play, Lyman did extremely fine work. "Shiek," best of luck!

*Sister  
H. E. Pevey  
1.2  
French*

*died Aug. 7, 1930. Sick quite a while. 18 yrs. 1915-1916. 1917-1918. 1919-1920. 1921-1922. 1923-1924. 1925-1926. 1927-1928.*



FLORENCE IRENE RAWLING

"Roxie"

Blue Moon Ticket Committee for Senior Play

Florence is one of our shorthand stars. Her ability to get transcriptions is the envy of the Senior Shorthand girls—including Hibernian. She can typewrite as well. To see her meandering about this noble institution, one would think her a meek person—but in the girls' locker room, it actually takes her about half the afternoon to get ready to go home—this time being intercepted with thrilling confidences given to all who care to listen. We know that she'll succeed as a shorthand teacher because of her love of "dictating".

*Handwritten notes: "I'll be a shorthand teacher", "I'll be a shorthand teacher", "I'll be a shorthand teacher"*



PAUL VINCENT RAYBALL

"Pat"

Senior Play

"Pat" may well boast of many accomplishments, among which are his playing an ability, which he seems loathe to exhibit about school. The class owes "Pat" many thanks for his interest in the *Good Luck* shows how to handle scenery. By the way—didn't he play the fraternity brother with ease? It's just natural to "Pat". If you ever have desire to converse with a person skilled in French, just call on "Pat". Incidentally, he is the best-looking and best liked fellow in English C. We wonder why?

*Handwritten notes: "Only three years & you will be a senior", "Good Luck"*



EDITH MARY ROBINSON

"Edie"

French Club  
Dramatic Club  
Tennis Club

Glee Club  
Operetta

Oh, don't be so wise . . . sounds like "Edie" in the corner spinning off her collection of "wise cracks". Much sarcasm is used by this little dame, but just the same, "Edie" is in most of the school activities, and tries to do her share. She is well liked by the under classmen, especially when they want help to do their French. "Edie" doesn't like the men folks, we all know—but we can forgive her for that. We wish her the best of success in her future work.

*Handwritten notes: "Nikes", "Edie"*



MARY BERNADETTE ROUSSEAU

"Mae"

Operetta  
Dramatic Club  
Senior Play

Business Manager of Blue Moon  
Tennis Club

Mae is one of the live wires of the Senior Class. Miss Rousseau is not fat but pleasingly plump. Has she failings—a few—namely, bananas and chocolate bars in which she indulges quite frequently. She has good business ability which she has shown by being business manager of the "Blue Moon". Mae is also an accomplished actress having taken prominent parts in "Pickles" and "The Hidden Guest".

Mae aspires to be a nurse, her motto being "kill or cure". We all hope she will succeed in her vocation as well as she does in P. A. D.

*Handwritten note: "St. Margaret"*



ETHEL MINNIE SCOTT "Scott"  
 Glee Club  
 Basketball  
 Senior Dance Committee  
 Dramatic Club  
 Operetta

Ethel is a very sweet, conservative young lady. Among her laudable qualities, she embodies honesty, unselfishness, and kindness.

At the girls' basketball games Ethel was at her best, running here and there after the ball.

We hear Ethel is to study the art of hair dressing. Best wishes, Ethel. Whatever you do, we know it will be done well.

*Best wishes to you future Seniors.  
 May your future life be full of happiness  
 Ethel*



CHRISTINA NORMAN SIMPSON "Tina"  
 French Club  
 Committee of Senior Dance

"Tina's" winning smile and pleasing way will come in handy because she is going to be a nurse. Her position as a dispenser of eats in the lunch room has made her popular. One never knows what Christina has on her mind, as she keeps her supply of knowledge to herself, often times outshining the best. We are all very sure that she will succeed in her chosen profession on account of her ability, as well as her smile and dimples.

*Nurse  
 Lowell Sen*

STANLEY LAW SNOW "Stan"  
 Latin Club  
 Tennis Club  
 Blue Moon—Editor in Chief  
 Executive Board A. A.  
 Senior Play  
 News Reporter for Sports

Oh, I say. Do you remember Mr. Cudkins—Ralph, I mean, of the Senior Play? Wasn't he great! ! ! Girls—did you say girls? How Stanley's ears popped up! Suspicious? Well, all fellows are the same. His preference is brunettes, just to be obstinate, but we can't blame him—all the blondes being taken. "Stan" is quite a tennis player, having won first prize in the 1927 tennis tournament. Coming down to brass tacks, it is hard to find a fellow like Stanley, so willing and ambitious to work for the success of any project. As he has won first honors in the class, who can doubt that in the years to come he will walk off with greater honors?

*Stanley Snow  
 3 more years  
 then a senior.*

*B. U*



CLIFFORD HERMAN VANUM "Potty"  
 Football

Clifford Vanum, or better known as "Potty," needs little, if any, introduction. He was quarterback on the football team, and incidentally he was the smallest man on it. At first he impresses one as being very quiet but in the geometry class his shyness seems to vanish. This is probably due to the fact that he sits next to his sparring partner, John Birtwell.

We know his easy, genial manner will carry him on through life without many mishaps.

*Best wishes to you  
 happy in your future  
 years @ C.H.S.  
 Potty*



*Just made my plans when I was 10*



IDA JOHANNA WIKANDER

French Club

Dramatic Club

*Kimball - raised 92*

A quaint girl, with a charming personality and pleasing ways, is Ida. With her gentle manners and soft voice she reminds us of the girl of yesterday. However, Ida is real modern and greatly enjoys the activities of the 20th century.

We hear Ida has become interested in commercial work and plans to enter Kimball's Business School. Evidently she enjoyed being office girl!

We know her friendliness and good-nature will bring her success.



CLARA WILLIAMS

Blue Moon

Program Committee of Senior Play

"Willie"

*Best of another  
Bank Cup at Kustan  
Loretta*

Clara seems to be a quiet girl, but from the result of a private investigation we know she is different outside of school. She is one of the modest, unassuming persons who are apt to surprise you unexpectedly. It is overwhelming to count the number of times the dimple in her right cheek flashes, especially in acknowledgment of teasing she gets from one of the male members of the class. Clara is undecided about her work, but her background at C. H. S. will serve her in good stead. Since her hair is gloriously blond, we know she will succeed.



EUGENIA STELLA ZABIEREK

Blue Moon

Basketball

"Jenny"

Eugenia is one of our quietest students. She is also one of our most studious. You will usually see her studying over her shorthand or P. A. D. She has also scored in basketball. Just try and get the ball away when Eugenia has it! One thing must be said of her—when anyone needs a helping hand, Eugenia is always on the spot, ready to do her best. We hope that she may fulfill her ambitions and make us proud to have known her as a member of our class.

*Bank Cup at Kustan  
Loretta  
that you're like in  
Eugenia*



## JUNIOR CLASS

### OFFICERS

*President*

*Vice President*

*Secretary-Treasurer*

John McQuade

Wilbur McCormack

Agnes Olsen

Contrary to the usual custom, the Junior Class undertook the responsibility of making the Yearbook. In spite of all handicaps, the Juniors tried to publish a Yearbook surpassing all others of previous years. Whatever success they have obtained has been due largely to the support received from all sides.

On October 10, the Juniors invited the Sophomores to a Hare and Hound Chase. The chase began at the High School and ended in the vicinity of Miss Susan McFarlen's house. Refreshments were served, after which various games were played.

As has been the custom of other years, the class held a Christmas Frolic at the Center Town Hall with the members of the school as invited guests. A short comedy was presented. Each person was given a joke Christmas gift. Music for dancing was furnished by the High School Orchestra.



## SOPHOMORE CLASS

### OFFICERS

*President*  
*Vice President*  
*Secretary-Treasurer*

Donald Smith  
 Grace Bridgeford  
 Alice Fisher

To acknowledge the hospitality of the Juniors, the Sophomores gave a Hallowe'en Party to the Class of 1929 on October 28. Comical sketches, songs and playets made up part of the program. An appropriate lunch was served consisting of cider, doughnuts, and pumpkin pie. General dancing followed the refreshments.

The Sophomores again took the lead by being the first to initiate the idea of a Leap Year Party. In true Leap Year style, the girls invited the boys and paid the admission. The committees in charge deserve real credit for their efforts as the party was one of the most enjoyable held this year. The sketches were amusing and well presented. The High School Orchestra played for dancing.

The year closed with the class looking forward to being called "Jolly Juniors."



## FRESHMAN CLASS

### OFFICERS

*President*

Raymond Vennard

*Vice President*

Franklin Davis

*Secretary-Treasurer*

Ann Larkin

The Freshman class this year is extra large and thus it was difficult to bring the members all together. However, due to some of its lively members, it has been able to put on a few good plays.

In basketball, the Freshmen beat the Juniors but were defeated by the Sophomores and Seniors.

Although they have not done anything spectacular as yet, there's another year coming, so watch out for the Freshmen!



### “THE HIDDEN GUEST”

The Senior Class presented a three act mystery play, “The Hidden Guest”, in the Chelmsford Town Hall on May 3, 1928, and in North Chelmsford on the following evening.

#### THE CAST

Otto Hubner .....	Robert Bowen	Minnie Mayfield .....	Joan Quinn
Tad Wilson .....	Paul Rayball	Melons .....	Alice Harmon
Bert Judkins .....	Lyman Pevey	Chester Briggs .....	Wendell Luke
Ralph Judkins .....	Stanley Snow	Nellie Trotwood .....	Cecilia Larkin
Ruby Mayfield .....	Louise Graham	Mrs. Barrington .....	Mae Rousseau
Policeman McCarthy .....		Lorne Howard	

Oow-w! Crash! Bang! Spooks in the big house and no men to calm the two lonely women living there. But “Melons”, a character portrayed so successfully by Alice Harmon, attributed these strange noises to the returned spirit of “poor old Uncle Timothy”. Even though she was tied to a chair, Alice made no protest, for it was her firm belief that Uncle Timothy was haunting Joan Quinn, the fair spinster, who, despite her fears and worries, refused to go to Boston to see about the bonds. Then in stole Lyman Pevey, the college boy with the inevitable yellow slicker, who would risk life and death to make the fraternity, and who obeyed to the letter the orders of the initiator, Paul Rayball. Pevey’s transformation of the ironing-board to a flapper was a real work of art. The visit of the niece, Louise Graham, who brought her charming personality into full play, added brightness to the scenes, as did the visiting guests—Mae Rousseau and Cecilia Larkin. Robert Bowen, the escaped convict, slunk around in typical villain manner, and with his slouched hat and yellow slicker just made you shudder. Stanley Snow, the elderly suitor, who was so considerate of his young fiancée, acted the part cleverly and showed real talent. The efficient valet, always hovering around in readiness to do his master’s biddings, was Wendell Luke. As the tall policeman, with his shiny badge and appetite for coffee, Lorne Howard was a hit.

The lighting effects on the stages, managed by Arthur P. Kirk '29, contributed greatly to the success of the performance. The success of the play showed the careful and untiring work of the coaches, Miss Reed and Miss McCarthy.



## DRAMATIC CLUB

### OFFICERS

*President*

Edith Charlton

*Vice President*

Ruth Johnson

*Secretary & Treasurer*

Martha Linstad

The Dramatic Club gives a student the opportunity to develop what talent he possesses and helps to do away with self-consciousness. With this aim in view, skits, readings, and debates are put on by the members at the meetings. Plans are being made for a minstrel show which is to be the main presentation of the club for the year. Miss Reed acts as the supervisor.



"In Old Vienna"

### "IN OLD VIENNA"

On February 17 and 20 the Girls' and Boys' Glee Clubs presented the musical comedy in "In Old Vienna" or "Pickles" at the Center and North Town Halls.

Jonas H. Pennington, an American millionaire pickle manufacturer, and his daughter, June, arrive at Vienna during Carnival time. They find Jones, the advertising expert of Pennington's Peter Piper Pickles, carrying on his work with a will. A wealthy acquaintance, Lady Vivian, also arrives on her annual search for her lost daughter. Kinski, a pompous police chief, hears of this and decides to pass off Louisa, a waitress at Hans Maier's Inn, as the lost daughter. Of course, he intends to marry her afterward and obtain the fortune.

As events lead on Kinski's plot is exposed by his two assistants, Bumski and Rumski; Ilona, the supposed child of the gypsy Chieftain, Jigo, is found to be the daughter of Lady Vivian; Jones is awarded the hand of Ilona; Lady Vivian becomes Mrs. Pennington; Arthur Crefont wins recognition of his art and also the hand of June.

#### *The Cast*

Hans Maier, Proprietor of Wurzelpraeter Inn	Charles Emery
Louisa, a waitress	Mae Rousseau
Capt. Kinski, Chief Detective of Vienna	Norman Walker
Bumski	} Kinski's Faithful Sleuths
Rumski	
J. Jennison Jones, Advertising Expert	{ Edward Miner
Jigo, the Gypsy Chieftain	{ Donald Smith
Ilona, a Gypsy Girl	John McQuade
Arthur Crefont, a Poor Artist	John Hogleund
June Pennington, an American Heiress	Cecilia Larkin
Jonas Pennington, an American Pickle Manufacturer	Brendan Quinn
	Dorothy Dixon
Lady Vivian Delaney, an English Widow	Wilbur McCormack
	Ann Larkin

As J. Jennison Jones, John McQuade, knew his "Psychology of Advertising" and proved to be quite the lover on the side. Incidentally, "Daddy Dotes on Shredded Oats" was the by-word of the school for weeks. The charming gypsy maiden, Cecilia Larkin, sang and danced her way into the hearts of Jones and the audience. John Hogleund, the gypsy chieftain, put much force and pep into his part. Norman Walker, the pompous police chief, strutted around in true professional manner and with his clever accomplices, Donald Smith and Edward Miner, furnished the humor of the evening. A typical, friendly, German inn owner was Charles Emery and his disguise was comical, to say the least. It was surprising to find how Wilbur McCormack lost his boredom and weariness when Ann Larkin, the fascinating widow, entered the scene. The duets of the lovers, Dorothy Dixon and Brendan Quinn, were very pleasing and delighted the audience. The chubby little German waitress, Mae Rousseau, knew her Deutsche and "got her man" as well.

Miss Leslie MacDonald acted as accompanist. Miss Hyde was in charge of the musical numbers, and the Misses Reed and Donahoe coached the acting. All should be complimented on the success of the performance.





### BOYS' GLEE CLUB

#### *Tenor*

N. DIXON  
C. EMERY  
R. HARMON  
R. KARCH  
W. LUKE  
W. McCORMACK  
A. PETERSON  
B. QUINN

#### *First Bass*

E. HABERMAN  
J. HOGLUND  
C. HOYT  
E. JEWETT  
E. MINER  
G. REIS  
D. SMITH  
W. WENTWORTH  
N. WALKER

#### *Second Bass*

J. BIRTWELL  
W. EDGE  
A. HOWARD  
A. KIDDER  
A. KIRK  
R. McGLINCHEY  
J. McQUADE  
D. PARKER  
J. WARD

The members of this club are a merry group of Chelmsford High School's best singers. They exhibited their talent in the operetta, "In Old Vienna" to the best of their ability. The Boys' Glee Club will also sing at graduation.

Miss Charlotte Hyde acted as director, assisted by Miss Leslie McDonald as pianist.



### GIRLS' GLEE CLUB

#### *First Soprano*

RUTH BILLSON  
EDITH CHARLTON  
DOROTHY DIXON  
MADELINE FREEMAN  
BARBARA GREENE  
ISABELLE HARMON  
EDNA HOYT  
ANN LARKIN  
EDITH ROBINSON  
ETHEL SCOTT  
RUTH JOHNSON

#### *Second Soprano*

ALICE CLARKE  
EDNA DAVIS  
BERTHA ELLIS  
ALICE HARMON  
JENNIE KRASNECKY  
LESLIE McDONALD  
THELMA PAIGNON  
LOUISE PERHAM  
AGNES OLSEN

#### *Alto*

FRANCES BARON  
GRACE BRIDGEFORD  
RUTH CALDER  
ALICE FISHER  
LENA GAGNON  
CATHERINE HEHIR  
ANNETTE LOISELLE  
ANNA LUND  
ALICE McENANEY  
RUTH SARGENT

The Girls' Glee Club this year was composed of about thirty voices. The first public appearance was made in the operetta "In Old Vienna." Here the singing was greatly appreciated by the audiences of both villages. The Girls' Glee Club, together with the orchestra, will help to furnish the graduation music. It will render two numbers and will give a selection with the Boys' Glee Club.

Miss Charlotte Hyde, our new music supervisor, directed this club. Miss Cecilia Larkin served as pianist.



Pianist, C. Larkin  
 Back row: Miss Hyde, H. Ellinwood, L. Pevey, D. Smith  
 Front row: J. Hoglund, J. McQuade, E. Peterson, C. Emery, L. Bellwood

### THE HIGH SCHOOL ORCHESTRA

Charlotte Hyde, *Director*  
 Cecilia Larkin, *Piano*  
 Lyman Pevey, *Saxophone*  
 Donald Smith, *Cornet*  
 Harold Ellinwood, *Banjo*

John McQuade, *Violin*  
 Charles Emery, *Violin*  
 John Hoglund, *Violin*  
 Esther Petterson, *Violin*  
 Leslie Bellwood, *Drums*

One of the most important organizations in the school, one which gives pleasure to others as well as valuable training to its members, is the orchestra.

The High School Orchestra is small this year, but in spite of its few members has been doing some remarkable work. It is quite in demand, and most favorable comments have been heard on all sides. The first public appearances were made on the evenings of February 17 and 20, at the performances of the operetta "In Old Vienna." Its next appearance was at the Junior Frolic. Here it furnished the music for the dancing, as it did also for the Leap Year Party, and the Basketball Banquet. At assemblies the orchestra has opened the program with two or more numbers, greatly enjoyed by the Student Body. We regret that by graduation we will lose two of its best members, but some are left and new faces will appear.

The orchestra is under the guidance of Miss Hyde, director of music, and the success of this organization is due in no small measure to her instruction and lively interest.



Back row: B. Quinn, L. Pevey, F. Baron, E. Davis, A. Loiselle, E. Haberman, S. Osborne  
 Front row: A. Gauthier, F. Rawling, W. Luke, Miss Harmon, S. Snow, J. Krasnecky, C. Williams,  
 E. Charlton, E. Zabierek

## THE BLUE MOON

### EDITORIAL BOARD

*Editor-in-chief*  
*Assistant Editor*  
*Business Manager*  
*Exchange Editor*  
*Sport Editor*

Stanley Snow  
 Jennie Krasnecky  
 Mae Rousseau  
 Frances Baron  
 Brendan Quinn

### ART BOARD

Edith Charlton  
 Wendell Luke  
 Stanley Osborn  
 Lyman Pevey

Florence Rawling  
 Eugenia Zabierek  
 Clara Williams

### PRINTING BOARD

Alice Gauthier  
 Annette Loiselle  
 Edna Davis  
 Emil Haberman

*Faculty Advisor, Josephine F. Harmon*

In October a group of students met in Room 10 for the purpose of organizing a school paper. It was decided to enlarge the "Budget", which had been put out as a project by the Office Training Class and turn it into a school paper. A new board was elected, its members being chosen from the whole school with the above results. It was thought the "Budget" was too commercial sounding for a school paper and the name "Blue Moon" was accepted, which is a combination of blue and maroon, the school colors.

The magazine has been enlarged from time to time, and various departments have been added which have noticeably improved the paper. One of the outstanding features of the "Blue Moon" has been original drawings by the Art Department; some of the covers and illustrations have been worthy of professional rating.

As the magazine has been wholly a school product—literary material drawings, and printing—it has been a publication in which the school could take just pride.

Great credit should be given to Miss Harmon for her interest and direction of our school magazine and in making its first year one of marked success.



## FRENCH CLUB

### OFFICERS

*President*  
*Vice President*  
*Secretary-Treasurer*

Alice Harmon  
 Jennie Krasnecky  
 Dorothy Dixon

### MEMBERS

John Birtwell  
 Frances Bowen  
 Edith Charlton  
 Dorothy Coburn  
 Dorothy Dixon  
 Mary Fitzpatrick  
 Marion Grantz  
 Alice Harmon  
 Isabelle Harmon

Mae Hines  
 Margaret Johnson  
 Jennie Krasnecky  
 Alice McEnaney  
 Mabel Morrell  
 Helen Newman  
 Dorothy Olsson  
 Ebba Peterson

Josephine Quigley  
 Joan Quinn  
 Edith Robinson  
 Christinia Simpson  
 Mildred Shinkwin  
 Stanley Snow  
 Earl Watt  
 Benjamin Whiting  
 Ida Wikander



LATIN CLUB

OFFICERS

- |                 |  |
|-----------------|--|
| <i>Consuls</i>  | Alice McEnaney<br>Wilbur McCormack                                 |
| <i>Quaestor</i> | Edna Hoyt  |
| <i>Aediles</i>  | Norman Walker<br>Abbie Beattie<br>Esther Petterson<br>Bertha Sears |

MEMBERS

- Abbie Beattie  
Maurice Corneillier  
Clara Dexter  
Harriet Flemings  
Madeline Freeman  
Barbara Greene  
Dorothy Harrington  
Edna Hoyt

- Olga Kempe  
Anna Lund  
Wilbur McCormack  
Alice McEnaney  
John McEnaney  
Thelma Paignon  
Esther Petterson

- Brendon Quinn  
George Reis  
Francis Safford  
Bertha Sears  
Wendell Simpson  
Stanley Snow  
Norman Walker  
Earl Watt



Back row. A. Harmon, J. Krasnecky, R. Johnson  
 Middle row: A. Loiselle, F. Bowen, M. Grantz, D. Coburn, J. Quigley, E. Davis, A. Gauthier  
 Front row: A. McEnaney, J. Quinn, C. Larkin, Miss Harmon, M. Kinch, I. Harmon, E. Peterson

## CHELMSFORD HIGH SCHOOL SAVINGS SYSTEM

### OFFICERS

<i>President</i> , Cecilia Larkin	<i>1st Vice President</i> , Joan Quinn
<i>Treasurer</i> , Margaret Kinch	<i>2nd Vice President</i> , Alice McEnaney
<i>1st Ass't Treasurer</i> , Edna Davis	<i>3rd Vice President</i> , Frances Bowen
<i>2nd Ass't Treasurer</i> , Ruth Johnson	<i>4th Vice President</i> , Josephine Quigley
<i>Senior Clerk</i> , Alice Gauthier	

### TELLERS

Alice Harmon	Jennie Krasnecky	Marion Grantz
Isabelle Harmon	Dorothy Coburn	Annette Loiselle
	Ebba Peterson	

*Faculty Advisor*, Josephine F. Harmon

The Chelmsford High School Savings System is one of the busiest organizations in school. The purpose of this organization is to teach the students to become thrifty and to establish regular and systematic habits of saving. This year, because of the change in the school daily schedule, a new system of handling deposits was adopted. A bank trustee was stationed in each homeroom on every Tuesday and Thursday to receive deposits instead of having the students go to Room 2. The Seniors seem to be the most thrifty as Room 5 was the winner in all contests for 100% depositors—Room 1 coming in a close second.

Margaret Kinch has been a very efficient treasurer and has been ably assisted by the other trustees.

The trustees were rewarded for their labors by a banquet at which they were the guests of the Lowell Institution for Savings, together with the trustees of the Lowell High School Bank. At this banquet much fun and enjoyment was derived from moving pictures of the trustees that had been taken earlier in the year.



Back row: S. Snow, W. Thayer  
 Middle row: G. Reis, J. Krasnecky, I. Harmon, J. McQuade, W. McCormack  
 Front row: E. Stearns, R. Bowen, R. Coates, Advisor; M. Turner, Advisor; E. Thwing, Physical Director; C. Larkin

## ATHLETIC ASSOCIATION

### EXECUTIVE BOARD

<i>President</i> , Robert Bowen	<i>Senior Member</i> , Cecilia Larkin
<i>1st Vice President</i> , Ernest Stearns	<i>Junior Member</i> , Arthur Kirk
<i>2nd Vice President</i> , Isabelle Harmon	<i>Sophomore Member</i> , George Reis
<i>Secretary</i> , Wilbur McCormack	<i>Three at large</i> , Stanley Snow
<i>Treasurer</i> , Jennie Krasnecky	"    "    "    John McQuade
<i>Faculty Advisors</i> , Ralph P. Coates	"    "    "    William Thayer
"    "    Marion L. Turner	<i>Athletic Director</i> , Ellsworth R. Thwing

The Athletic Association is the largest organization in the school and the only one that requires membership fees. The money received in this way finances baseball, football, basketball, and tennis activities. With the exception of a very few, the entire student body is enrolled in the association, which shows that an active interest is taken in athletics.

Until this year, no sporting events had been a tempted on Saturdays or holidays. With the coming of football and basketball, the association un lertook to hold games on those days in order that the townspeople might have the opportunity to witness the sporting contests. This proved to be a success.

The executive board consists of an advisory board of twelve, two faculty advisors and the athletic director. Any plan of the association must be ratified by this board.

The association has enjoyed the first year of our athletic director, Mr. Thwing. His ever-willing spirit and his untiring interest in good, clean sports for our school have established him deeply in the hearts of us all.

The co-operation and assistance received from all have empowered the executives to complete a most successful year.





Back row: Manager E. Jewett, A. House, W. Giguere, E. Miner, L. Pevey, W. Thayer, A. Howard, J. Birtwell, J. Clarke, N. Walker, Assistant Manager Reis, Coach Thwing  
 Front row: R. Bowen, A. Kirk, C. Varnum, A. Kidder, J. Gale, Capt. McCormack, J. Hoglund, A. Hamel, D. Parker, R. McGlinchey, B. Quinn

## FOOTBALL

Chelmsford High School was represented on the gridiron this year for the first time. Although we won no games, the season was considered by many to be quite successful, considering the fact that all the players were inexperienced and the opponents were experienced. The team was late in starting, due to the fact that the fundamentals of football had to be learned before the team could play.

The first game was lost to Howe High School in Billerica, 6-0. In this game the inexperience of the team was very evident. The score was made in the first half of the game. Chelmsford tightened up in the last half and held its opponents.

The second game was won by Lowell, Team B. The team played well against the more experienced team. Chelmsford scored a touchdown in the first half on an intercepted forward pass. In the second half Lowell came back very strong and made two touchdowns, leaving the score at the end of the game 12-6.

The third game was played against Wilmington High at Wilmington. The game was won by Wilmington, 6-0. It was a hard fought game with a hard fighting team. After the score in the first half, Chelmsford held Wilmington for the remainder of the game.

The last game was played at home with Lowell, Team B. Lowell won the game 9-0. Both teams played hard. Lowell scored in the second period and kicked the goal. In the third period a touchdown was gained, making the score 9-0. Chelmsford came back strong in the last period but was unable to score.

A big season is expected next year, and although three or four valuable men are graduating, we are hoping that their places will be filled.

Football Team: E. Jewett, Manager; J. Gale, W. Thayer, A. Kidder, A. Howard, A. Kirk, R. Bowen, D. Parker, J. Hoglund, A. Hamel, M. Olshinski, W. Giguere, C. Varnum, R. McGlinchey, B. Quinn, L. Pevey, W. McCormack, Captain.

Substitutes: J. Clark, A. House, J. Birtwell, E. Miner, N. Walker, G. Reis, Assistant Manager.



Back row: S. Proctor, Coach Thwing, D. Parker  
 Middle row: E. Jewett, W. Thayer, J. Gale, E. Watt  
 Front row: B. Quinn, Capt. Howard, C. Hoyt, R. Bowen

BASKETBALL

For the first time in its history Chelmsford High School was represented in basketball. The team, composed entirely of inexperienced players, made a very good showing in the league by taking fourth place. The team was rather late in starting the season as all the players had to learn the essentials of basketball, but a big season is expected next year. The results of the season were as follows:

Chelmsford High School	vs.	Opponents	C. H. S.
*Westford	.....	30	7
Lowell Vocational	.....	14	12
*Littleton High	.....	9	10
*Billerica	.....	11	10
Mitchell Academy	.....	12	10
*Wilmington	.....	11	20
*North Andover	.....	19	9
*Westford	.....	48	1
*Littleton	.....	23	9
Lowell Vocational	.....	13	10
*North Andover	.....	36	18
Mitchell Academy	.....	30	9
*Wilmington	.....	11	28
*Billerica	.....	17	26

\*League Games

Team: Capt. L. Howard, center; C. Hoyt, forward; B. Quinn, forward; R. Bowen, guard; E. Jewett, guard.

Substitutes: S. Proctor, W. Thayer, J. Gale, D. Parker, E. Watt.

The above players, with the exception of E. Watt, were awarded letters at the banquet on April 18.



Back row: Coach Thwing, T. Lakin, F. Bowen, J. Krasnecky, O. Kempe, B. Sears, M. Freeman, H. Rigby, E. Hoyt.  
 Front row: E. Scott, I. Harmon, Capt. J. Quinn, E. Charlton, E. Zabierek, D. Bliss.

GIRLS' BASKETBALL

The first girls' basketball team of C. H. S. was organized under the supervision of Coach Thwing. Joan Quinn was elected captain and Edna Hoyt, manager. The line-up was as follows:

Joan Quinn	} Forwards	Ethel Scott	} Guards
Isabelle Harmon		Jennie Krasnecky	
Edith Charlton	Center-forward	Eugenia Zabierek	

SCHEDULE

Westford	78	Chelmsford	9
Wilmington	18	"	0
Westford	42	"	7
Littleton	16	"	31
Littleton	27	"	34
Wilmington	12	"	15
Faculty	23	Varsity	32

As every class had a team, an Interclass Basketball Tournament was held to determine the victor. The Seniors obtained this position by winning all the games they played.

At Chelmsford's first basketball banquet, held in the Town Hall, April 18, the following girls received letters—J. Quinn, E. Charlton, E. Scott, I Harmon, J. Krasnecky, E. Zabierek, O. Kempe, D. Bliss, and E. Hoyt.



Back row: T. Varnum, C. Emery, C. Olsson, D. Smith, B. Quinn, E. Brotz, Manager N. Walker  
 Middle row: Reporter S. Snow, F. Grant, L. Bellwood, S. Proctor, W. Thayer, J. McQuade, J. Clarke, R. Eno, Ass'tant Manager R. McMaster  
 Front row: C. Hoyt, R. Bowen, A. Kidder, Coach Thwing, Capt. R. McGlinchey, W. McCormack, D. Lupien, E. Miner

## BASEBALL

The first call for baseball was issued March 25, 1928 by Coach Thwing. About eight pitchers and four catchers reported. On April 10 a general call was issued and about thirty candidates reported.

The team entered a four team league, consisting of Johnson (North Andover), Wilmington, Howe (Billerica), and Chelmsford, to compete for a large baseball trophy donated by the Horace Partridge Sporting Goods Company.

Chelmsford's schedule was as follows:

May	10	C. H. S. at Nashua, Jr.
	12	Woodbury at C. H. S.
	17	C. H. S. at Westford
	19	Nashua at C. H. S.
	21	C. H. S. at Johnson
	24	Wilmington at C. H. S.
	31	C. H. S. at Punchard
June	2	Howe at C. H. S.
	6	C. H. S. at Westford
	7	C. H. S. at Woodbury
	12	Lowell Vocational at C. H. S.
	16	Johnson at C. H. S.
	18	C. H. S. at Wilmington
	21	C. H. S. at Howe

The team was as follows: E. Miner, R. Eno, third base; B. Quinn, short stop; S. Proctor, second base; A. Kidder, first base; W. McCormack, catcher; R. McGlinchey, pitcher; C. Emery, D. Smith, left field; R. Bowen, center field; J. Clark, right field.

Substitutes: D. Lupien, pitcher; C. Olsson, catcher; F. Grant, right field; T. Varnum, left field; W. Thayer, first base; E. Brotz, center field; L. Howard, right field.

Norman Walker acted as manager, Raymond McMaster as assistant manager, and Stanley L. Snow as reporter.



### TENNIS CLUB

<i>President</i>	Wilbur McCormack
<i>Vice President</i>	Clifford Hoyt
<i>Secretary-Treasurer</i>	Margaret Kinch

One of the many branches of the Athletic Association is the Tennis Club. At the beginning of the year, plans for a tournament were begun, but due to conflicting interests, were never carried out. The courts were in constant use, despite this fact.

It is hoped that this spring a tournament may be put on with lively competition. So many people are interested in tennis that it would seem that this could be done very successfully. The supervisor of the Tennis Club is Miss Turner.



Back row: N. Walker, L. Howard, J. Hoglund, J. Gale

Front row: E. Jewett, R. Bowen, E. Miner, Coach, E. Thwing, B. Quinn, W. McCormack, C. Hoyt

### RELAY RACE

On March 17, 1928 in the Lowell High School Annex, Chelmsford High was represented in a 2400 yard relay race. The race was for a large silver cup donated by Mrs. Gardner W. Pearson, a member of the Lowell School Committee. Chelmsford competed with Howe (Billerica) and Wilmington High Schools.

Early in the race Howe fell into the rear while Chelmsford and Wilmington fought for the lead. All the fellows ran well but luck was against them. Wilmington held the 2 yard lead to the end of the race and took the cup for the second time. If Wilmington takes the cup once more, it is theirs to keep.

Chelmsford offers no excuse but the bad start. The blockade of Hoyt and McCormack's bad spill were two great handicaps, but notwithstanding we came in second. Watch us next year!



## CLASS WILL

Be it known to all that we, the class of 1928 of Chelmsford High School, Chelmsford, Massachusetts, being of sound and disposing mind, and realizing that we are about to pass to parts unknown, do hereby make and declare the following as our last will and testament.

Our president, Joan Quinn, leaves her school spirit to Bertha Sears.

Edith Charlton bequeaths unto Leona Clark a book on "How to Grow Tall".

Louise Graham leaves the mirror in the locker room to Grace Bridgeford. Clifford Varnum wills his position as quarterback on the football team to Brendan Quinn.

Edwin Jewett leaves Thelma Paignon in the trusted care of Mr. Hobbs.

Alice McEnaney bequeaths her poetic ability unto Bertha Ellis.

Florence Buchanan leaves her bookkeeping knowledge to Alice Fisher.

Clara Williams wills her blond bob to Abbie Beattie.

Arthur Howard leaves the "Mayflower" to Arthur Kirk.

Stanley Snow bequeaths his tennis racket to Donald Smith.

Alice Harmon leaves her report card to Clara Dexter.

Cecilia Larkin leaves the piano to Leslie MacDonald.

Margaret Johnson bequeaths unto Rosie Fantozzi a volume of books on "How to be Seen and not Heard".

Robert Bowen leaves his ability as a public speaker in Room 10 to Bill McCormack.

Emil Haberman leaves a foot of his height to Raymond Vennard.

Lena Gagnon bequeaths her boyishness unto Irene Pratt.

Christina Simpson leaves the soup in the lunch room to the rest of the school.

Edith Robinson leaves her gum to Thelma Peterson.

Lyman Pevey wills his art of being well dressed to "Micky" Fay.

Ernest Stearns leaves his witty sayings to Donald Parker.

Ida Wikander leaves her position as office girl to Alice Clarke.

Mae Hines bequeaths her raven locks to Ruth Calder.

"Matches" Olshinski wills his "Chem" formulae to Paddy Hoyt.

Isabelle Harmon leaves Bill Thayer in care of Ruth Johnson.

Ethel Scott bequeaths her good looks unto Agnes Olsen.

Wendell Luke leaves his artistic ability to Stanley Osborn.

Florence Rawling and Frances Baron leave their friendship to Mildred Shinkwin and Josie Quigley.

Mae Rousseau leaves her fondness for talking to Letitia Winters.

Paul Rayball leaves his baseball ability to Carl Olsson.

Lorne Howard bequeaths his daily visits to Room 1 to some lucky person—he hasn't quite decided yet upon anyone.

Margaret Kinch leaves her wonderful management of the Bank and Trustees to Annette Loiselle.

Alice Gauthier wills her typewriter to Edna Davis.

Jennie Krasnecky leaves her curling iron to Mildred Buchanan.

Eugenia Zabierek wills her defense on the basketball team to Frances Bowen.

<i>President</i>	Joan Quinn	<i>Secretary</i>	Jennie Krasnecky
<i>Vice President</i>	Ernest Stearns	<i>Treasurer</i>	Isabelle Harmon

## AS WE LIKE IT

- |   |                                    |
|---|------------------------------------|
| 1. King of Kings                        | Mr. Hobbs.                         |
| 2. The Pioneer Scout                    | A. Howard.                         |
| 3. The Baby Cyclone                     | Room 9.                            |
| 4. The Joy Girl                         | D. Dixon.                          |
| 5. Our Gang                             | R. Vennard, N. Dixon, R. Fantozzi. |
| 6. The Jazz Singer                      | J. McQuade.                        |
| 7. The Port of Missing Girls            | Locker Room.                       |
| 8. The Heart of a Follies Girl          | A. Larkin.                         |
| 9. Sadie Thompson                       | E. Robinson.                       |
| 10. Wild Geese                          | Noon Rush.                         |
| 11. Honor First                         | S. Snow.                           |
| 12. Graham McNamee                      | A. Kirk.                           |
| 13. The Smart Set                       | Juniors.                           |
| 14. The Wrecker                         | M. Olshinski (in the lab.).        |
| 15. West Point                          | Physical Ed.                       |
| 16. The Jazz Girl                       | L. Graham.                         |
| 17. The Little Shepherd of Kingdom Come | R. McGlinchey.                     |
| 18. The Pathe News                      | Blue Moon.                         |
| 19. The Patent Leather Kid              | L. Pevey.                          |
| 20. Why Boys Leave Home                 | Report Cards.                      |
| 21. Beau Sabreur                        | Needed in French Class.            |
| 22. Swim, Girl, Swim                    | I. Pratt.                          |
| 23. Watch My Dust!                      | Sophomores.                        |
| 24. My Best Girl                        | J. Quinn.                          |
| 25. Metropolitan Theatre                | Room 10 on Wednesday Morning.      |
| 26. The Legion of the Condemned         | Students having two flunks.        |
| 27. Mistakes Will Happen                | Teachers, notice!                  |
| 28. Gold Diggers                        | A. A.                              |
| 29. London After Midnight               | Session in Room 5.                 |
| 30. Streets of Shanghai                 | Corridors.                         |
| 31. Vanities of '28                     | Seniors.                           |
| 32. The Silver Cord                     | That which binds us to C. H. S.    |

### MORE FAREWELLS

We, the students of Chelmsford High School, were sorry to hear of the resignations of two of our faculty, Miss Turner and Miss Harmon.

Miss Turner, who leaves to be married in the summer, has been with us for four years as our biology and mathematics teacher. Her interests in us have been many and varied—from keeping baseball scores to attending us with First Aid. Ever loyal, willing, and interested, Miss Turner has served us well. We want her to know her services have been appreciated and that it has been our pleasure to have known her. We wish her a bright and happy future.

Miss Harmon, who leaves to enter the business world, has been with us for seven years as teacher of commercial subjects. Special praise should be given her for the tickets, magazines, programs, etc., which have been printed under her direction. We have all taken pride in this work as it has represented our school to the public, and has been the source of many favorable comments. She leaves with us the fond memory of her justice, loyalty, and firmness. Always interested in our studies and activities, Miss Harmon has been ever-faithful. We wish her all success and happiness in her new field of work.

## Autographs



Jeanne M. Low -

Do not forget me even if I'm not here next year.  
 S. Elizabeth Gray '31

Σ ditte W. Donahoe

Helen A. Reed

Ralph P. Coates

J. Christine Booth

Josephine D. Harmon

Howard E. Hobbs Best wish



## Ships

*“Some ships go East and some go West,  
Whilst the self-same wind doth blow;  
For its rudder and sail, and not the gale,  
Decide where the ship shall go.*

*Nor wind nor gale controls our fate,  
As we journey along through life;  
It's the set of the soul decides the goal,  
And not the calm and the strife.”*



BALFE SERVICE COMPANY

*Printers of Your Year Book*

190 MIDDLE STREET

LOWELL, MASSACHUSETTS



Deposit in the

**Chelmsford High School Savings System**

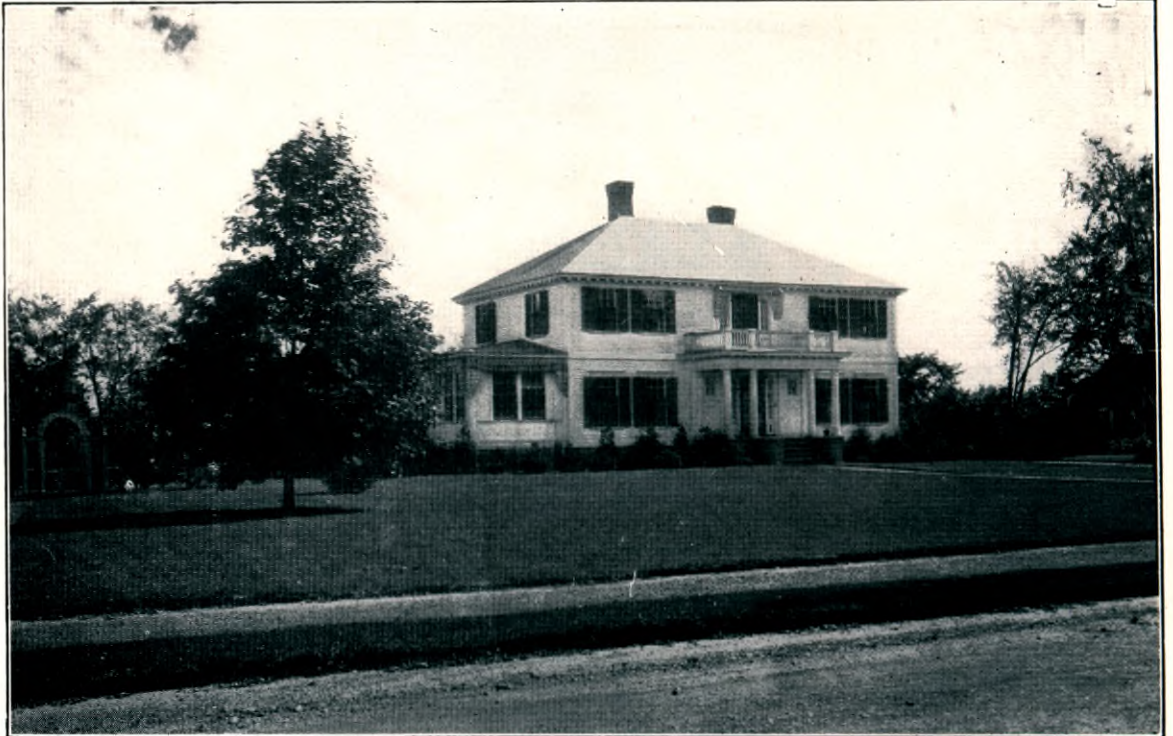
— of the —

**LOWELL INSTITUTION FOR SAVINGS**

Incorporated 1829

18 SHATTUCK STREET

HAVE YOUR HOUSE REDECORATED WHILE  
ON YOUR VACATION THIS SUMMER



THOMAS M. KIRK

*Interior Decorator and Painter*

*Painting, Paperhanging, Kalsomining, Bronzing, Glazing, etc.*

TELEPHONE 6317-W

PRINCETON STREET

NORTH CHELMSFORD

Dear Hattie:  
 I love you with all my <sup>water</sup> mussel  
 might and main.

Compliments of

A FRIEND

Edith (corn) Celia  
 Best of Luck. Please  
 "Specks"

"Gatty Corn"  
 "Specks"  
 "Lip" "Pete"

The  
 CENTRAL SAVINGS BANK



A. B. CAMERON

J. CAMERON

## CAMERON BROTHERS

*Wholesale and Retail Confectioners*

Agents for

Lenox Chocolates, Lowney's, Schrafft's,  
and Numerous Others

TELEPHONE CONNECTION

157 MIDDLESEX STREET

LOWELL, MASS.

---

### *Distinctive Furniture Creates Better Homes*

Quality Furniture at Moderate Prices

Now is the time to beautify your home

Place your order now for *AWNINGS* to insure prompt  
delivery.

*WINDOW SHADES* of best quality made to measure.  
Hartshorn products

## ARTHUR ROBINSON

Telephone 4438-M

NORTH CHELMSFORD

JOHN J. DUNIGAN

JAMES LONG

*Compliments of***DUNIGAN COAL CO.**

TELEPHONE 843

NORTH CHELMSFORD

**COMPREHENSIVE SERVICE**

*The functions of a modern banking institution cover many varied activities. We offer the experience and trained judgment of our executives through our Bond Department, our Trust Department, our Savings Department, our Foreign Exchange Department, as well as our Commercial Department, and in a variety of other services which are at your disposal. Consult us at your convenience.*

**The UNION NATIONAL BANK***In the Business Heart of Lowell*

CAPITAL and SURPLUS \$1,200,000

*Hope you get in a childrens  
hospital and have a lot of  
little babies tagging after  
you. Best of Luck.*

Compliments of

*Earl Alcorn*

## ARLINGTON STUDIO

BOSTON, MASSACHUSETTS

Compliments of

A FRIEND

### *We Manufacture*

Our Own Curtains, Overdrapes, Scarfs, Bed Sets, Etc. We do Hemstitching and Special work. We carry a Full Line of Silk Draperies, Fringes, Cretonnes, Curtain Goods, Curtain Rods. Hosiery, Corsets and Brassieres. Ladies' and Children's Wear. Linens and Cotton Goods, Bed Spreads, Sheets and Pillow Cases.

Our Prices are Guaranteed the Lowest.  
Our Special ONYX POINTEX Ladies' Full Fashioned Silk Stockings.

### Chain Curtain Stores

15 CENTRAL ST.      LOWELL  
Near Merrimack Street

### North Chelmsford Motors

PERCY T. ROBINSON, Proprietor

*First Class Repairing  
on All Makes of Cars*

Road  
Service  
and  
Towing

**Ford**  
THE UNIVERSAL CAR

Work  
Guaranteed

Authorized Ford Dealers  
Gas, Oil, and Accessories  
New and Second Hand Cars  
For Sale

Garage Tel. 7848

Res. 4994-W

### JOHN J. MONAHAN

Fire Loss Adjuster (*Licensed*)

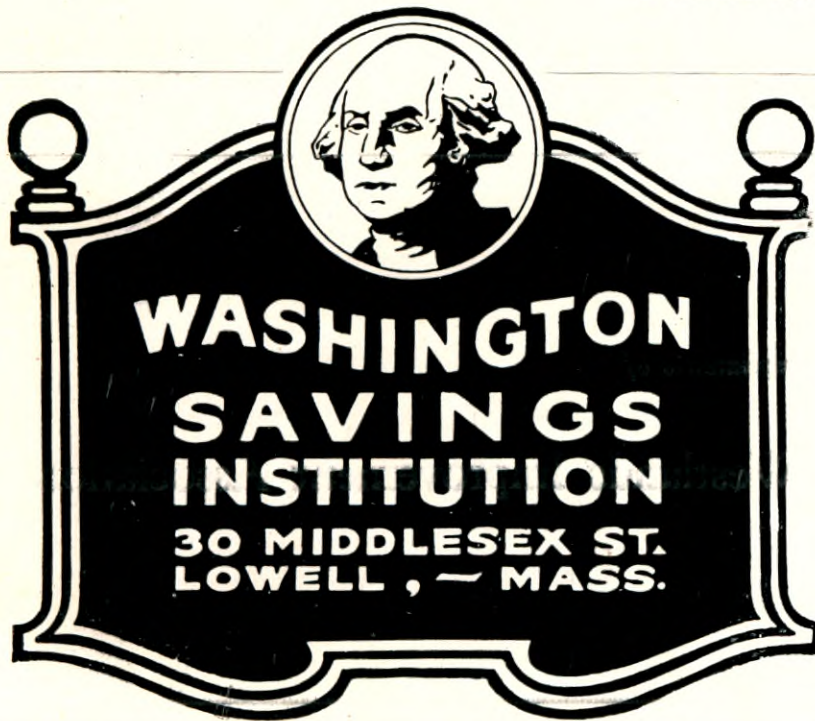
219 Central Street  
LOWELL, MASS.

*ACKNOWLEDGEMENT*

*The members of the Editorial Staff wish to thank the Advertisers who made the publication of the Year Book possible.*

*We are very grateful to them and sincerely hope that our friends will patronize them generously.*

ARTHUR P. KIRK,  
Business Manager.



*Compliments of*

**A FRIEND**

*Compliments of*

HARRY W. SARGENT

M A S O N S

*Plastering, Brickwork, Composition Flooring and  
Magnesite Stucco*

TELEPHONE CONNECTION

WESTLANDS

CHELMSFORD, MASS.



LET US ILLUSTRATE FOR YOU  
BY MAKING  
YOUR PRINTING PLATES

LOWELL  
53 BEECH ST

LAWRENCE  
278 COMMON ST

YOUR STORY IN PICTURES LEAVES NOTHING UNTOLD

*Compliments of*

EDWARD M. KELLEHER

Secretary-Treasurer

Eastern Massachusetts District Board of Approved Basket Ball

President

Greater Boston Umpires Association

JAMES F. O'DONNELL & SONS

*Undertakers*

## FURNITURE IS AN INVESTMENT

not an expense, and when you divide the cost of good furniture by the number of years of comfort and service it will give you, the cost of having an attractively furnished home is relatively small per year.

*Better Furniture for Less Money*

### A. E. O'Heir & Co.

15 Hurd Street

Lowell, Mass.

## Pomme's Filling Station

J. W. FREMEAUX, Proprietor

*Texas Gas and Golden Oil Our Specialty*

Princeton Boulevard, Cor. Church Street  
NORTH CHELMSFORD

## Blanche Hard Murphy

*Teacher of Stenography  
and Allied Business Subjects*

Residence

1107 Chelmsford Street  
CHELMSFORD, MASS.

412 Central Block  
LOWELL, MASS.

*Compliments of*

## A Friend

## Safety Tire Shop

*Tires Tubes Radios Accessories*  
*Willard Battery Service Station*

Telephone 5451

Vinal Square, North Chelmsford

*Compliments of*

## Westland Dairy

G. WINTERS

Fall's Drug Store—*Center*

Hill's—*North*



Allard's—*Westlands*

## Chelmsford Agencies

Red Box \$1.00 & \$2.00  
Brown Box \$.40 & \$.80  
Matinee .20

Gilson's—*West*

## Puritan Motor Sales, Inc.

FORD

LINCOLN

FORDSON

*Lowell's Finest Jewelry Shop*

Visit us for everything that's  
new in Jewelry on Gifts

## Prince-Cotter Co.

104 Merrimack Street

Lowell, Mass.

MAKERS OF YOUR 1929 CLASS RINGS

---

## John P. Quinn

Coal and New England Coke

Telephone 1180 - 2480

Office & Yards  
GORHAM & DIX ST.

Branch Office  
BRADLEY BUILDING

---

*Compliments of*

## A. & P. Diner

HARRY L. PEAVEY, Proprietor

Princeton St.

North Chelmsford

---

*Compliments of*

## North Chelmsford Bowling Alleys

JOSEPH D. RYAN, Proprietor



**Wadsworth Howland & Co.**

Incorporated

*Bay State**Paints, Varnishes, Lacquers  
and Brushes*

208 Central St. Lowell, Mass.

---

*FOR STUDY, WORK, or PLAY*  
no food is better than  
**PURE MILK**

Our MILK is  
**FRESH, PURE,**  
**PASTEURIZED, SAFE**

**Turner Centre System**

Butter, Eggs, Ice Cream

**JOHN J. RILEY***Groceries and Provisions*

1222 Gorham St. Lowell, Mass.

TELEPHONE 378

*Compliments of***A FRIEND**

---

*Compliments of***GEORGE E. GAGNON***Plumbing and Heating*

North Chelmsford

TELEPHONE 7166

**CHELMSFORD PINES***Steak and Roast Chicken  
Dinners, also Light Lunches*

Parties and Clubs Accommodated

Free Parking

FRANK J. GARVEY

---

Ray's Filling Station  
Dayton and Goodrich Tires  
Tire Repairing

Glen Ave.  
Corner Chelmsford St.  
TELEPHONE 77580

---

*Fresh Meats Fruit Vegetables*

JOHN E. SECOR

Quigley Ave.  
North Chelmsford  
TELEPHONE 8086-W

*Service Quality Price*

*Compliments of*

Lowell Oakland Co.  
*Lowell Home of*  
*Oakland All American Sixes*  
*— and —*  
*New Series Pontiac Sixes*

---

*Compliments of*

Boston Wholesale Millinery  
Company

141 Merrimack St. Lowell, Mass.

---

*Compliments of*

Jennings' Corset Shop  
*Surgical Work a Specialty*

309, 310, 311 Sun Building

*Compliments of*

### Parkhurst's Taxi Service

TELEPHONE 4880 or 71311

*Compliments of*

### H. M. STURTEVANT

Now located near the R. R. crossing  
on the Lowell Road

*Automobile Repairing and  
Overhauling*

TELEPHONE CONNECTION

*Compliments of*

### A. J. MELLO, Barber

Odd Fellows Hall

*Here to Serve the Public*

### The Maker & McCurdy Shop

at 198 MERRIMACK STREET

invites you to look at our assort-  
ment of dainty under-garments  
for **Graduation** and **Summer Wear**.

### ELSIE SMITH

*North Chelmsford's Leading  
Confectionery Shoppe*

Ice Cream Groceries Tobacco  
Gift Cards for All Occasions  
Lending Library

### EVA A. DUPUIS

*Hemstitching and Picot Edging,  
Covered Buttons, Buttonholes,  
Pleating, Rhinestones and Spots  
Set In.*

196 Merrimack St. Lowell  
TEL. 1150 Opp. KIRK ST.

*Compliments of*

### GEORGE L. ENO

CLASS of '26

*For Service Call 6654*

Haley's Market Chelmsford

### The Davis Cabinet Shop

A. H. DAVIS, Prop.

Furniture Repaired

Scissors Sharpened

Patterns Made

General Jobbing

Mowing Machine Knives Ground

Near Town Hall

CHELMSFORD CENTRE, MASS.

Telephone 2332-R

*Compliments of*

A FRIEND

Peacock Corset Shop

*Surgical Corsets and Belts  
Made to Order*

Corsets    Hosiery    Underwear

210 Bradley Building  
Up One Flight

*Compliments of*

RICHARD T. BOYD

*Contractor and Builder*

Golden Cove Road    Chelmsford  
TELEPHONE 2328-J

Triangle Filling Station

F. L. BLODGETT, Prop.

*Fancy Groceries*

*Fruits, Ice Cream, Candy,  
Tonics, Cigars and Tobacco*

NORTH CHELMSFORD

E. E. PAIGNON

*Wirthmore Feeds  
— and —  
John Deere Implements*

SOUTH CHELMSFORD

Dr. RAY G. FORGAYS

*Surgeon - Dentist*

TELEPHONE 5140

Chas. H. McIntire    Warren W. Fox  
Wm. H. Wilson    Raymond D. Hart

McINTIRE & WILSON

*Attorneys at Law*

600-606 Wyman's Exchange  
TELEPHONE 1412

LOWELL

RALPH S. HARLOW

*Insurance Service — All Forms*

430 Wyman's Exchange  
TELEPHONE 7912 or 1398

LOWELL

**Dr. JOHN J. WALSH***Dentist*

Old City Hall Building

ROOM 11 TEL. 4335  
226 Merrimack St. Lowell**CRYSLER COMPANY***Brushes of All Kinds*

NORTH CHELMSFORD

**Lincoln Lumber Co., Inc.***Lumber and House Finish*190 Lincoln St. Lowell, Mass.  
TELEPHONE 6215**P. H. HALEY***Meats, Groceries and  
Provisions*CHELMSFORD, MASS.  
TELEPHONE 6654**ROY E. PAIGNON***Fruit and Produce  
Sold on Commission*

Tel. Conn. Chelmsford

**Chelmsford Square Garage***A full line of Pure Paints  
and the Best in Hardware*

Auto Service and Livery

*Compliments of***MARY E. VALENTINE**

NORTH CHELMSFORD

*Compliments of***Haynes' Greenhouses**

1328 Gorham St. Lowell, Mass.

## SULLIVAN BROTHERS

*Printers*

238 Central Street  
LOWELL, MASS.

## FLORENCE NESMITH

GIFTS FROM ABROAD

Distinctive Wedding and

Anniversary Presents.

Bridge Prizes.

138 MARKET STREET      LOWELL

### *Do You*

Realize how little it costs to look good?  
Prove it to yourself by visiting our  
Beauty Shoppe.

We specialize in every branch of  
Beauty Culture and Hairdressing.

### Dixon's Beauty Shoppe

216 Appleton Bank Bldg.  
Telephone 1122

*The Art Of Being Lovely*

### C-O-V-1st

The French Artist in Beauty Culture  
Marcel Waving and Permanent Waving  
Hair examined FREE

40 Middlesex St., Lowell  
Telephone 808-R

## VIC'S BARBER SHOP

24 Middlesex St., Lowell  
Telephone 808-W

## ROSTLER'S MARKET

*No. Chelmsford's Big Store*

We wish  
the Graduates Success  
in their endeavors.

## WHITCOMB'S Fruit and Berry Farm

Home Made Ice Cream  
Butter-Kist Pop Corn  
Apples

NORTH ROAD      Chelmsford

## W. D. FALLS

*High Class Drugs*

Toilet Goods, Sodas, Confectionery  
and Ice Cream

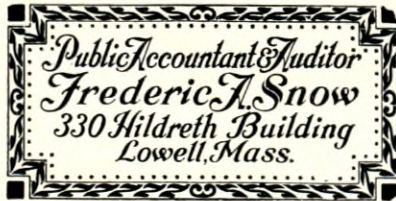
CHELMSFORD,      MASS.

*Compliments of*

## Chelmsford Girl Scouts

TROOP I

## KENNEY

*For FLOWERS*Bradley Building  
TELEPHONE 5378Frederick E. Morris,  
D. M. D.  
*Dentist*Old City Hall Building  
226 Merrimack St. Lowell, Mass.  
TELEPHONE 4381North Chelmsford  
Pharmacy*Drugs, Prescriptions,  
Sodas, Candy, Cigars*

Village House North Chelmsford

*Compliments of*Vinal Square Shoe Fix  
CHAS. PELLETIER, Prop.*Compliments of*

A FRIEND

Marion Lougee, Inc.  
Lamp ShoppeLamp Shade Materials and Wire Frames  
Shades Repaired and Made to Order  
All Kinds of Pillows and Shades for Sale.Free Instructions  
Daily and Tuesday EveningsWYMAN'S EXCHANGE  
9 Central St. Lowell  
TELEPHONE 1825

## WESTLAND MARKET

H. A. HINDMAN

*Meats, Groceries, and  
Provisions*

TELEPHONE 132

New York  
Life Insurance Company

F. P. Laughlin  
*Lowell Representative*

53 Central St. Room 216  
Lowell, Mass.

*Compliments of*

OSTROFF'S

*"Ware U bot the overalls."*

TOWN TAILOR

IVEN PEARSON, Prop.  
VINAL SQUARE

Furs Repaired  
Cleaning  
Repairing  
Pressing  
Dyeing

*All Work Guaranteed*  
*Suits Made to Order*

**ORTHOPTIC**  
GLASSES  
For Better Nerves

The EYE-way is the highway to better sleep, better memory and better disposition.  
We take the "us" out of nervous.

JOHN J. CLUIN  
*Optician*

19 Palmer St. Since 1882

VALLEY TEXTILE CO.

30 PRESCOTT ST.

*Lowell's*  
*Leading Silk Store*

*"Sew and Save"*

*Special rates to Class of 1928 for*  
*Graduation Invitations and Per-*  
*sonal Cards.*

Wm. T. Picken Printing Co.

North Chelmsford, Mass.

R. A. HENDERSON

*Socony Gas & Motor Oils*

GROCERIES

Cigars, Cigarettes & Tobacco,  
Candy, Ice Cream and Tonics.

Chelmsford St. opp. Perham Park  
TELEPHONE 78398

MELCON STUDIO

*High Grade Portraits*

Telephone 6813 for Appointment  
Enterprise Building

97 Central St. Lowell, Mass.



Latin club 29, 30, 31  
French club 30

**A. G. POLLARD CO.**  
THE NEW STORE FOR THRIFTY PEOPLE

*"Bigger and Better Than Ever"*



**Merrimack  
Street Front**

Majestically arising from the ashes of a disastrous conflagration which on June 3, 1926, utterly wiped out its entire business establishment, including virtually every semblance of stock, equipment and operating paraphernalia, this store, one of the oldest and most celebrated merchandising concerns in New England, returned to the fold with a bigger and better building, a more complete line of departmental favorites, and a determination to continue solicitation of the public's good will through maintenance of its proven policy as The New Store For Thrifty People.



**Palmer and Middle  
Streets**

A new building, new furnishings and many new departments but the same adherence to sound business principles that 50 years of retail merchandising have proven successful. Everything to facilitate service and satisfaction has been done.

*Values as Usual are the Best*

**Merrimack—Palmer and Middle Streets  
LOWELL, MASSACHUSETTS**